

TRIGA[®] GO

MODULAR DISPLAY SYSTEM

a high-end, long-lasting modular display

LEARN
MORE ON
**PAGE
2**



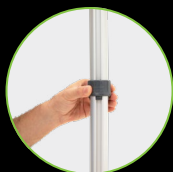
Features & Benefits



Graphic simply slides into grooves on the top and bottom rails.



Easily connect horizontal rails to vertical poles.



Join the top and bottom poles by turning the connector to lock.



Corner braces provide added stability to your display.



SHOWDOWNDISPLAYS.COM

ASI: 87188 PPAI: 254687 SAGE: 67383 UPIC: SHOWDOWN

Showdown[®]
DISPLAYS

TRIGA® GO MODULAR DISPLAY SYSTEM

The TRIGA® Go modular display system is a lightweight, portable display solution designed for easy setup and customization. It offers a sleek and professional presence for trade shows, events, and brand activations.

- Modular design allows you to expand and modify into various configurations
- Combine with other TRIGA® Go components to craft a highly adaptable and visually striking display (sold separately)
- Innovative fabric tension poles ensure a wrinkle-free finish
- One-piece wraparound graphic provides a polished look
- Available in single- and double-sided options
- Artwork is dye sublimated on recycled polyester knit
- 100% recycled media is made with fibers recycled from plastic bottles
- Compact and lightweight
- Packs flat for easy transport
- Tool-free assembly
- Warranties range between two and three years (see website for details)



TRIGA® Go Walls



Single-sided graphic wraps partially around the frame for a seamless front view.



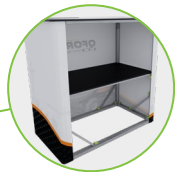
Double-sided graphic has a partial overlap on the backside.



38"

Available in 20"W, 38"W, and 79"W

TRIGA® Go Counter



20" countertop and internal shelf supports up to 50 lbs.; 38" and 79" countertop and internal shelves support up to 100 lbs.



monitor mount and shelves



waterfall hanger

TRIGA Go® accessories shown on 6'W TRIGA Go® wall (sold separately)

TRIGA® Go Accessories



Available in 10'W and 20'W

TRIGA® Go U-Booth

Looking for a ready-to-go booth package?

We offer pre-made TRIGA® Go kits.
See website for available kit options.



kit 1



kit 2



SHOWDOWNDISPLAYS.COM

ASI: 87188 PPAI: 254687 SAGE: 67383 UPIC: SHOWDOWN

Showdown
DISPLAYS